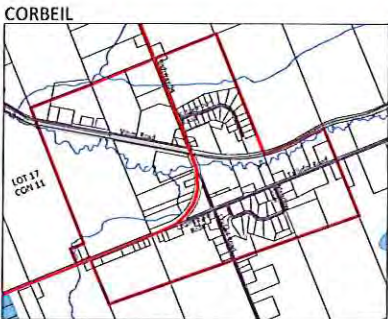
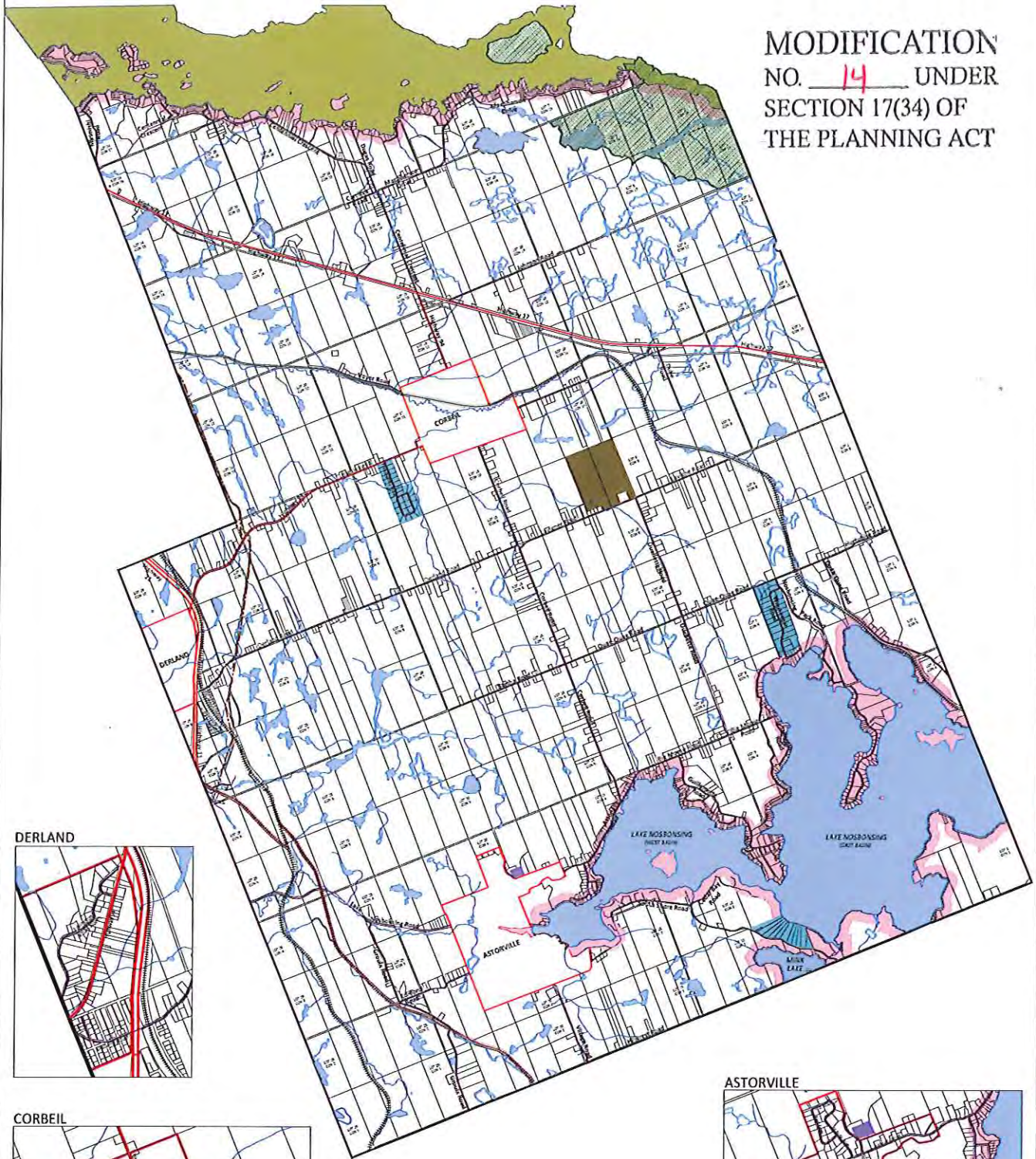


# SCHEDULE A - LAND USE DESIGNATIONS

MODIFICATION  
NO. 14 UNDER  
SECTION 17(34) OF  
THE PLANNING ACT



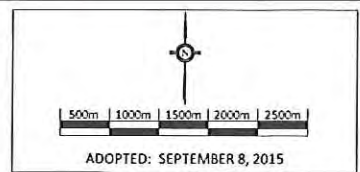
- Rural
- Waterfront
- Village
- Estate Residential
- Mobile Home Park
- Extractive Industrial
- Salvage Industrial
- Mattawa River
- Provincial Park

- Provincial Highway
- Municipal Roads
- Private Roads
- Railway Active
- Railway Abandoned
- Trans Canada Pipeline
- Rivers and Streams

\*Please note that the Village policies apply within Village boundaries except where another designation is shown.

Note: The base information of this plan was prepared from a variety of map sources and was used by permission of the Municipality of East Ferris. It is not a legal plan of survey. For precise location of plan features, recourse should be had to the original source data.

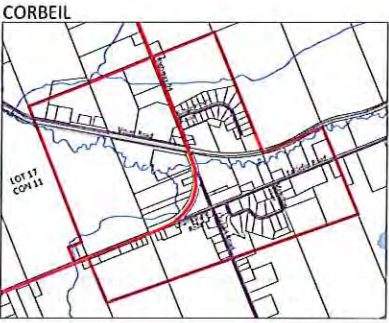
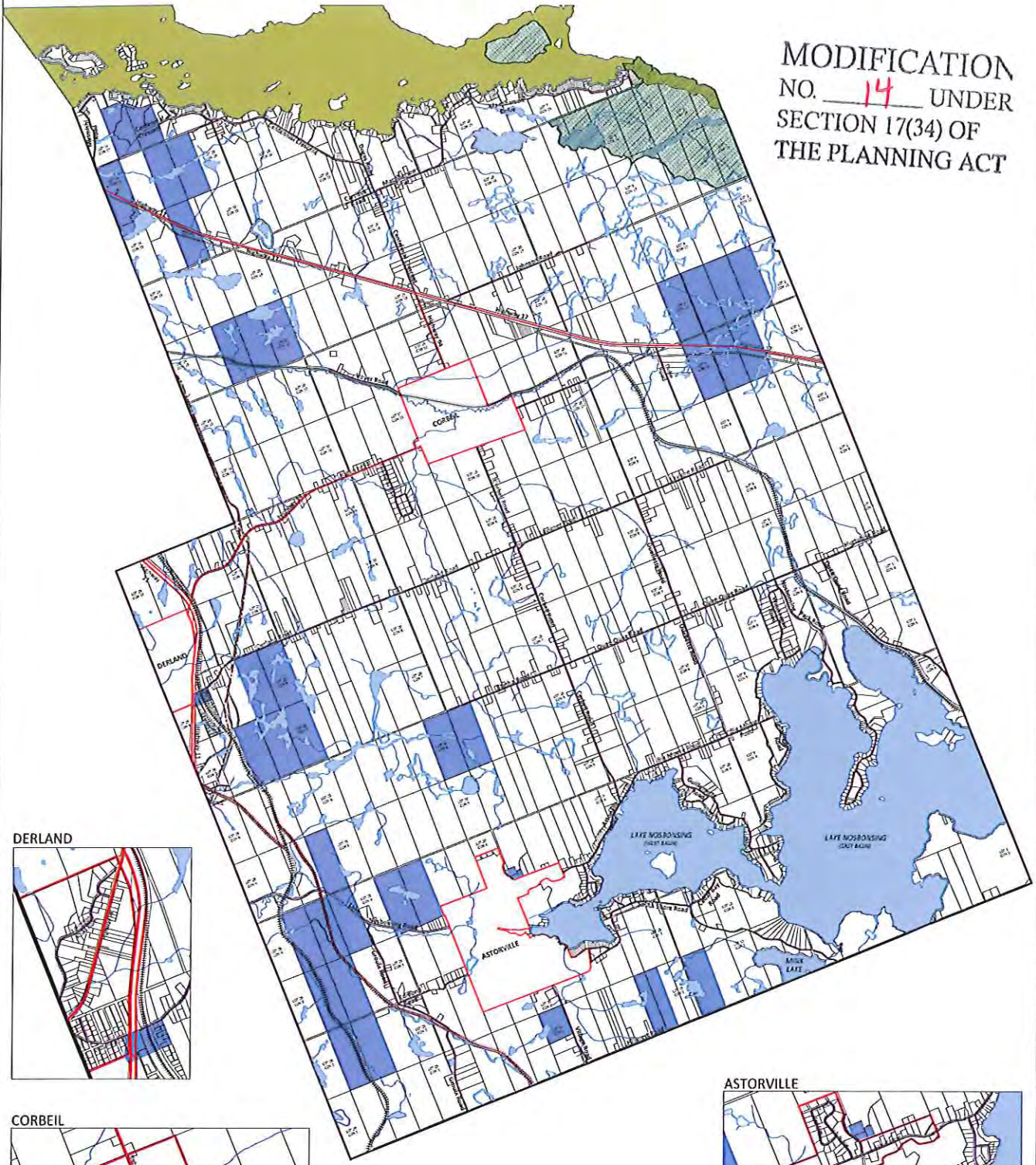
MMAH Decision is withheld on the delineation and description of waterbodies shown in the yellow colour





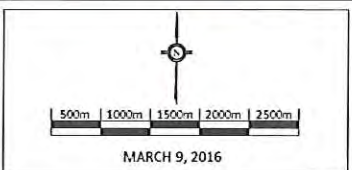
# SCHEDULE B - LANDS FOR ECONOMIC DEVELOPMENT

MODIFICATION  
NO. 14 UNDER  
SECTION 17(34) OF  
THE PLANNING ACT



- |                                |  |                       |  |
|--------------------------------|--|-----------------------|--|
| Village                        |  | Provincial Highway    |  |
| Lands for Economic Development |  | Municipal Roads       |  |
| Mattawa River                  |  | Private Roads         |  |
| Provincial Park                |  | Railway Active        |  |
|                                |  | Railway Abandoned     |  |
|                                |  | Trans Canada Pipeline |  |
|                                |  | Rivers and Streams    |  |
- \* MMAH Decision is withheld on the delineation and description of waterbodies shown in the yellow colour

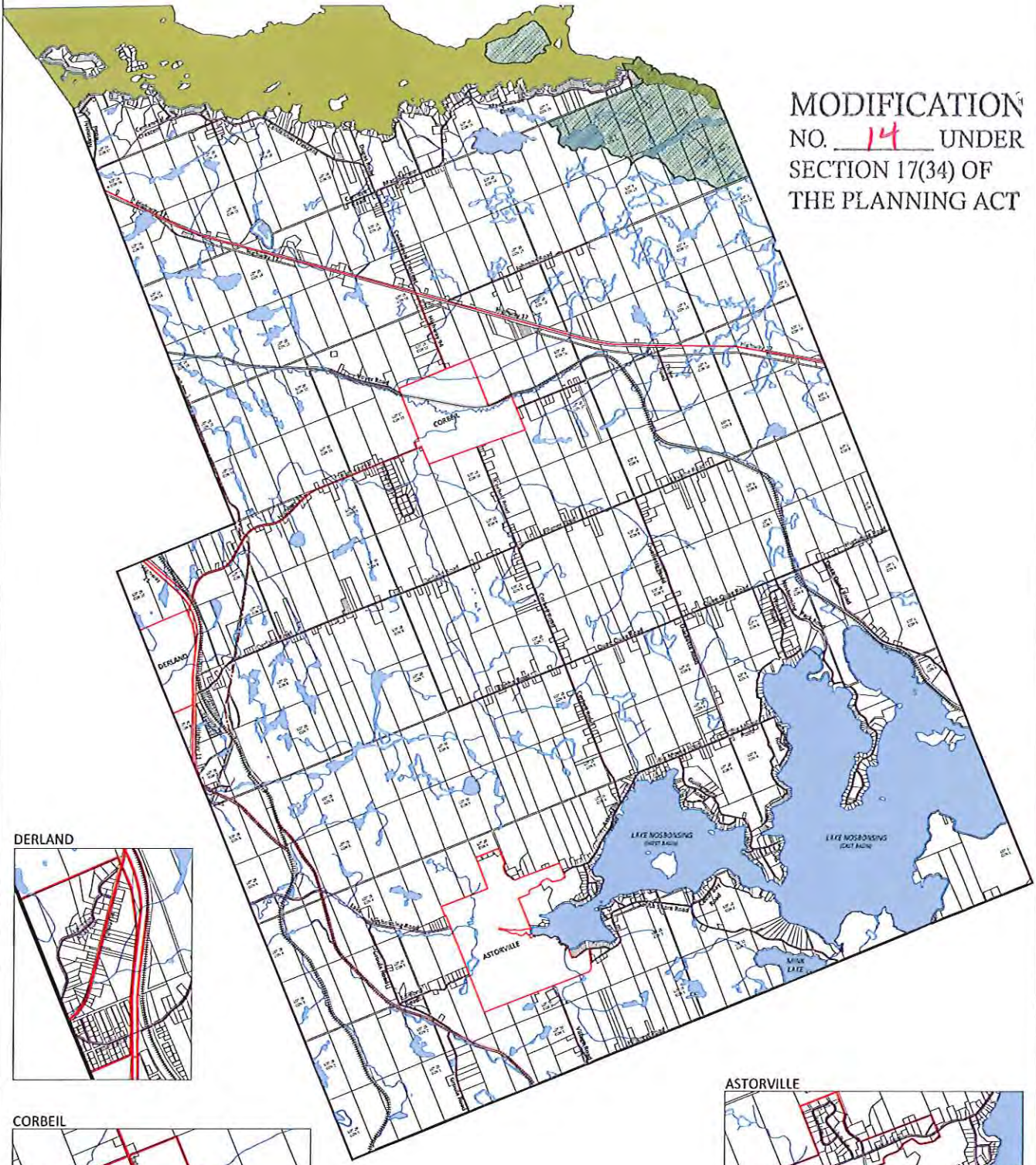
\* Please note that the Village policies apply within Village boundaries except where another designation is shown.  
 N.B.C. The final information on this plan was prepared from a variety of map sources and was used by permission of the Municipality of East Ferris. It is not a legal plan of survey. For precise location of plan features, owners should refer to the original source data.



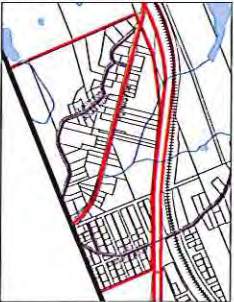


# SCHEDULE C - TRANSPORTATION and INFRASTRUCTURE

MODIFICATION  
NO. 14 UNDER  
SECTION 17(34) OF  
THE PLANNING ACT



DERLAND



CORBEIL



ASTORVILLE



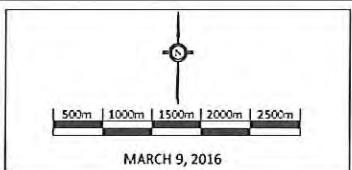
- Provincial Highway
  - Highway 11 - Class 1
  - Highway 17 - Class 3
  - Highway 94 - Class 5
- Municipal Roads
- Private Roads
- Railway Active
- Railway Abandoned
- Trans Canada Pipeline
- Rivers and Streams

- Village
  - Mattawa River
  - Provincial Park

\* MMAH Decision is withheld on the definition and description of waterbodies shown in the yellow colour

\* Please note that the Village policies apply within Village boundaries except where another designation is shown.

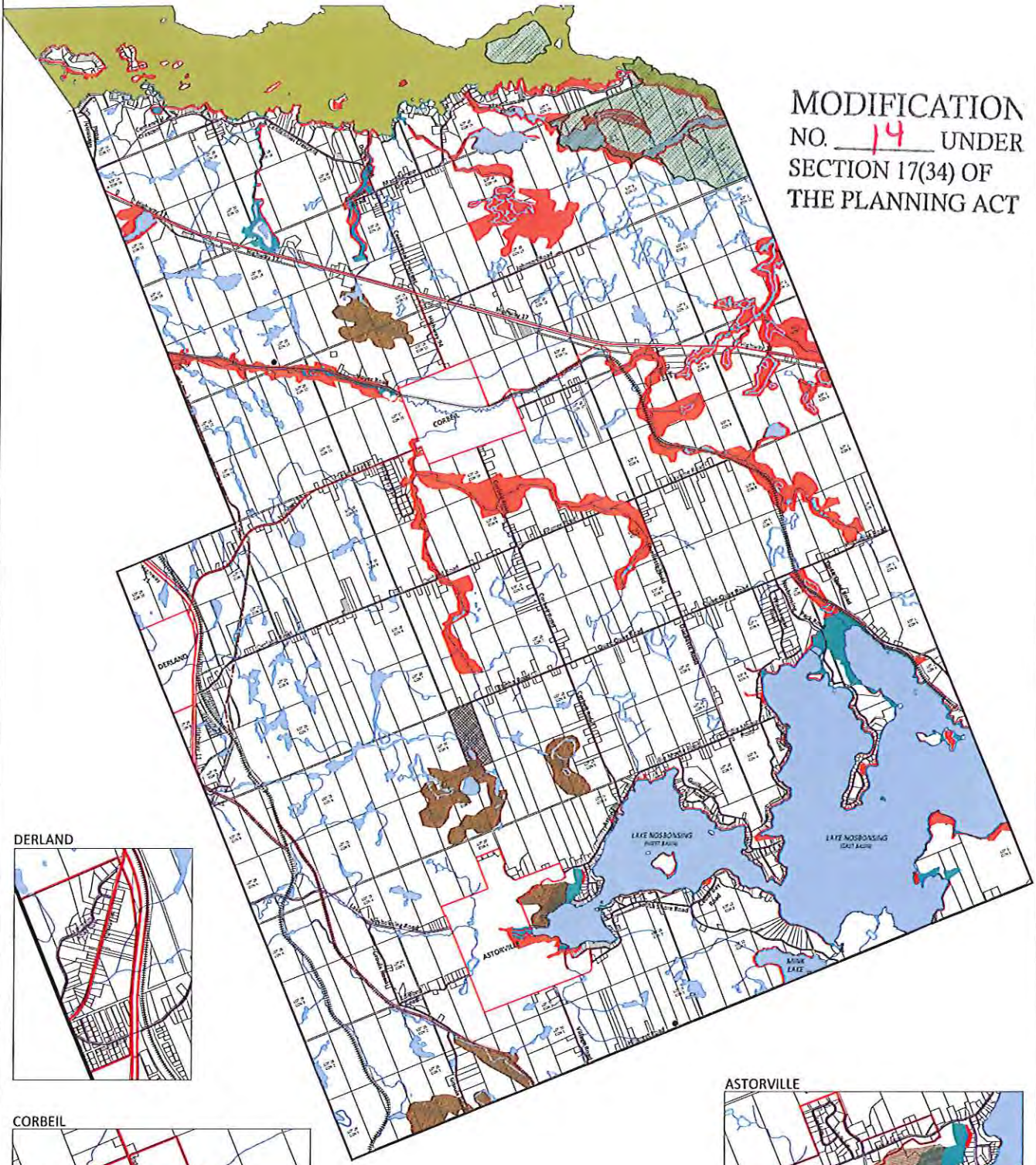
Note: The base information on this plan was prepared from a variety of map sources and was used by permission of the Municipality of East Ferris. It is not a legal plan of survey. For precise location of plan features recourse should be had to the original source data.





# SCHEDULE E - NATURAL and HUMAN MADE HAZARDS

MODIFICATION  
NO. 14 UNDER  
SECTION 17(34) OF  
THE PLANNING ACT



DERLAND



CORBEIL



ASTORVILLE



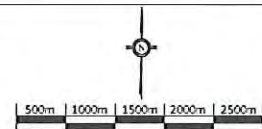
- Approximate Regulated Area
- Flood Plains
- Organic Soils
- Active Landfill Site
- Closed Landfill Site
- Mattawa River Provincial Park

- Provincial Highway
- Municipal Roads
- Private Roads
- Railway Active
- Railway Abandoned
- Trans Canada Pipeline
- Rivers and Streams
- Village

\* Please note that the Village policies apply within Village boundaries except where another designation is shown.

Note: The base information on this plan was prepared from a variety of map sources and was used by permission of the Municipality of East Ferris. It is not a legal plan of survey. For precise boundary of plan features recourse should be had to the original source data.

\* MMAH Decision is withheld on the delineation and description of waterbodies shown in the yellow colour

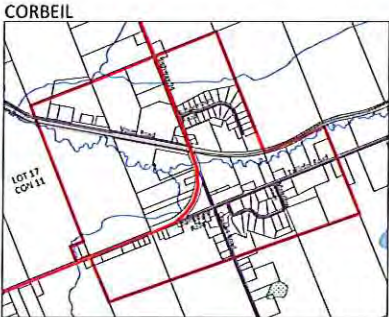
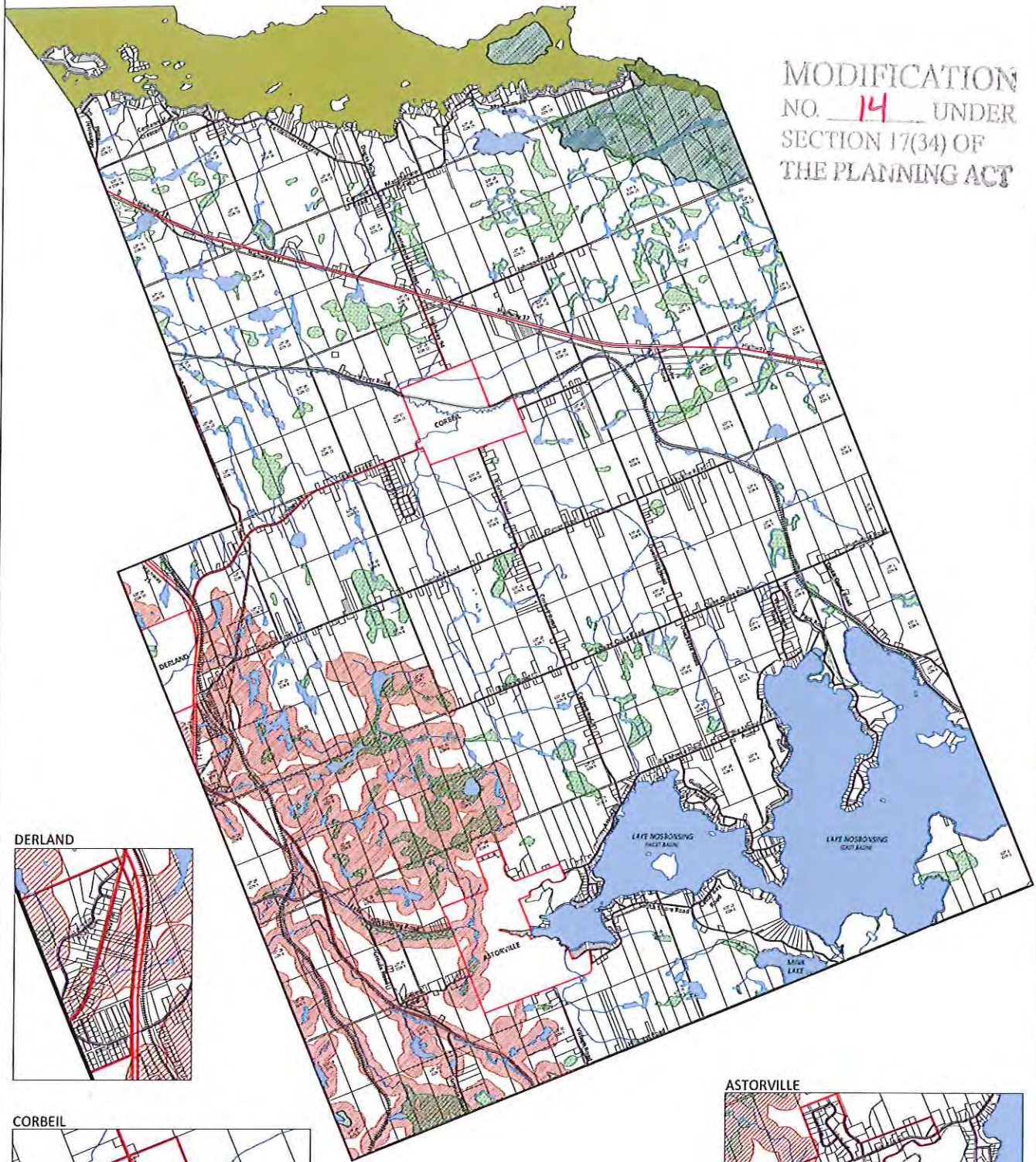


MARCH 9, 2016



# SCHEDULE F - SOURCE WATER INTAKE PROTECTION PLAN

MODIFICATION  
NO. 14 UNDER  
SECTION 17(34) OF  
THE PLANNING ACT



- Source Water Callander Issue Contributing Area (SW ICA)
  - Wetlands
  - Mattawa River Provincial Park
  - Provincial Highway
  - Municipal Roads
  - Private Roads
  - Railway Active
  - Railway Abandoned
  - Trans Canada Pipeline
  - Rivers and Streams
  - Village
- \* MMAH Decision is withheld on the delineation and description of waterbodies shown in the yellow colour

\*Please note that the Village policies apply within Village boundaries except where another designation is shown.  
Note: The base information on this plan was prepared from a copy of map sources and was used by permission of the Municipality of East Ferris. It is not a legal plan of survey. For precise location of plan features reference should be had to the original source data.

